



**HAL**  
open science

## Overview of the French contribution to the EMEP 2012-2013 summer and winter campaigns

V. Riffault, J.-L. Jaffrezo, J. Sciare, K. Sellegri, S. Sauvage, V. Crenn, A.  
Waked, Je. Petit, A. Colomb, S. Conil, et al.

### ► To cite this version:

V. Riffault, J.-L. Jaffrezo, J. Sciare, K. Sellegri, S. Sauvage, et al.. Overview of the French contribution to the EMEP 2012-2013 summer and winter campaigns. European Aerosol Conference, Sep 2013, Prague, Czech Republic. 2013. hal-01801063

**HAL Id: hal-01801063**

**<https://univ-smb.hal.science/hal-01801063>**

Submitted on 20 Oct 2023

**HAL** is a multi-disciplinary open access archive for the deposit and dissemination of scientific research documents, whether they are published or not. The documents may come from teaching and research institutions in France or abroad, or from public or private research centers.

L'archive ouverte pluridisciplinaire **HAL**, est destinée au dépôt et à la diffusion de documents scientifiques de niveau recherche, publiés ou non, émanant des établissements d'enseignement et de recherche français ou étrangers, des laboratoires publics ou privés.



Distributed under a Creative Commons Attribution - NonCommercial 4.0 International License

# Overview of the French contribution to the EMEP 2012-2013 summer and winter campaigns

V. Riffault<sup>1</sup>, J.L. Jaffrezo<sup>2</sup>, J. Sciare<sup>3</sup>, K. Sellegri<sup>4</sup>, S. Sauvage<sup>1</sup>, V. Cretn<sup>1</sup>, A. Waked<sup>2</sup>, J.E. Petit<sup>3,5</sup>, A. Colomb<sup>4</sup>, S. Conil<sup>6</sup>, J.L. Besombes<sup>7</sup>, A. Setyan<sup>1</sup>, E. Freney<sup>4</sup>, T. Leonardis<sup>1</sup>, N. Locoge<sup>1</sup>, V. Gros<sup>3</sup>, N. Bonnaire<sup>3</sup>, R. Sarda-Estève<sup>3</sup>, F. Dulac<sup>3</sup>, M. Hervo<sup>4</sup>, L. Chiappini<sup>5</sup>, O. Favez<sup>5</sup>, F. Gheusi<sup>8</sup>, G. Athier<sup>8</sup>, M. Mallet<sup>8</sup>, T. Bourriane<sup>9</sup>, G. Roberts<sup>9</sup>, J. B. Nicolas<sup>3,10</sup>, N. Pascal<sup>11</sup>, J. Descloitres<sup>11</sup>

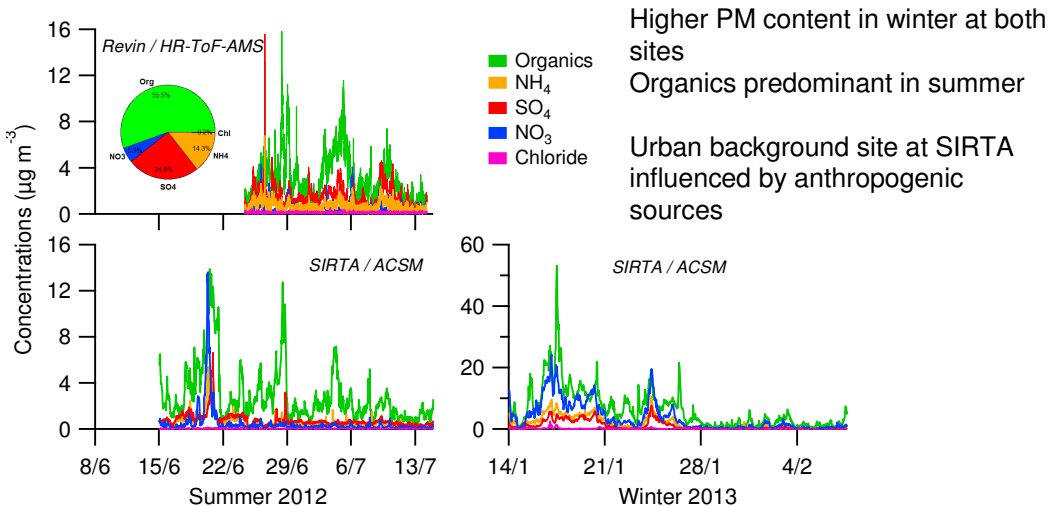


<sup>1</sup>Mines Douai, CE, F-59508 Douai, France; <sup>2</sup>LGGE (Univ Grenoble / CNRS), F-38402 Saint-Martin d'Hères, France; <sup>3</sup>LSCE (CEA-CNRS-UVSQ), F-91190 Gif/Yvette, France; <sup>4</sup>LaMP (UPB-CNRS-OPGC), F-63171, Aubière, France; <sup>5</sup>INERIS, F-60550 Verneuil-en-Halatte, France; <sup>6</sup>ANDRA-OPE, F-55290, Bure, France; <sup>7</sup>LCME (Univ Savoie), F-73376 Le Bourget du Lac, France; <sup>8</sup>OMP/LA (Univ Toulouse / CNRS), F-31400, Toulouse, France; <sup>9</sup>CNRM(Météo-France / CNRS), F-31057 Toulouse, France; <sup>10</sup>ADEME, F-49007 Angers, France; <sup>11</sup>ICARE (Univ Lille1), F-59655 Villeneuve d'Ascq, France

## 1. Objectives

- provide a large quality-controlled database of PM levels and chemical composition for **5 sites** during two contrasted seasons
- measure simultaneously **PM compounds and their precursors** to better understand processes such as secondary organic aerosols (SOA) formation or condensation of semi-volatile species
- assess the importance of **vertical exchanges** in the variability of PM ground levels, especially in case of dust events;
- determine **PM sources** and their relative contributions

## 3. Non-refractory PM<sub>1</sub>



## 2. Site locations and Instrumentation



Large variety of geographical locations and influences expected to affect PM measurements

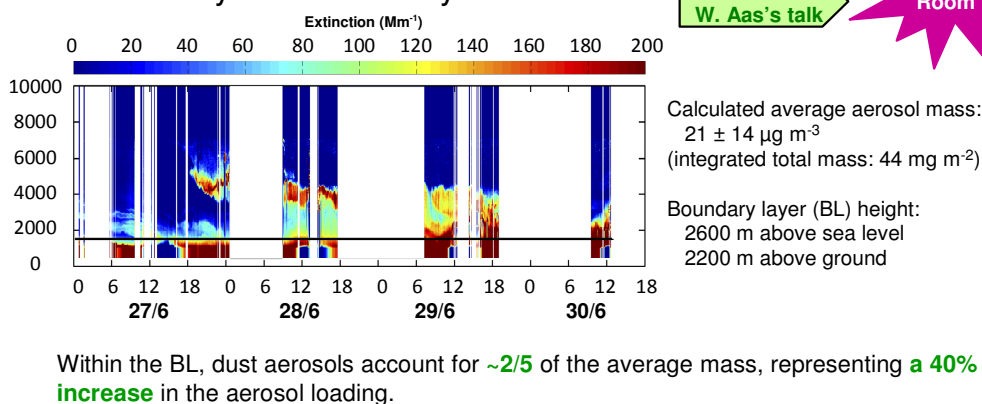
- Cap Corse: remote, coastal
- Puy-de-Dôme (PdD): remote, mid-altitude
- OPE: remote
- Sirta: urban background
- Revin: remote

	Sampling period	Cap Corse	OPE	Puy-de-Dôme	Revin	Sirta
PM <sub>10</sub> mass	< 1 hr	S, W	S, W	S, W	S, W	S, W
PM <sub>2.5</sub> mass	< 1 hr		S, W	S, W	S, W	S, W
PM <sub>1</sub> mass		S, W	S, W	S, W	S, W	S, W
PM <sub>10</sub> speciation	≥ daily	S, W	S, W	S, W	S, W	S, W
PM <sub>2.5</sub> speciation	≥ daily	S, W	S, W			S, W
PM <sub>1</sub> speciation (AMS, ACSM)	< 1 hr	S, W		W	S	S, W
Black Carbon	< 1 hr	S, W	W	S, W	S, W	S, W
Precursor (O)VOCs	≤ 6 hrs	S, W		S, W	S, W	S, W
NMHCs / (O)VOCs	< 1 hr	S			W	S, W
NO <sub>x</sub> , CO and O <sub>3</sub>	< 1 hr	S, W	S, W	S, W	S, W	S, W
CO <sub>2</sub>	< 1 hr			S, W	S, W	S, W
SO <sub>2</sub>	< 1 hr			S, W	S	S, W
NH <sub>3</sub>	< 1 hr				S	S, W
Diff./scat. coef.	< 1 hr	S, W	W	S, W		S, W
Extinction, AOD	< 1 hr	S, W	W	S, W		S, W
Size distribution	< 1 hr	S, W	S, W	S, W		S, W

## 4. Vertical exchanges

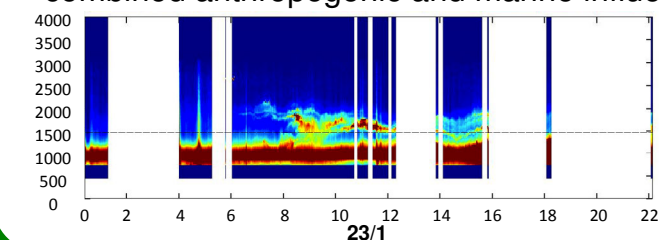
PdD summer data: **dust event** observed from June 27-30

⇒ confirmed by chemical analysis

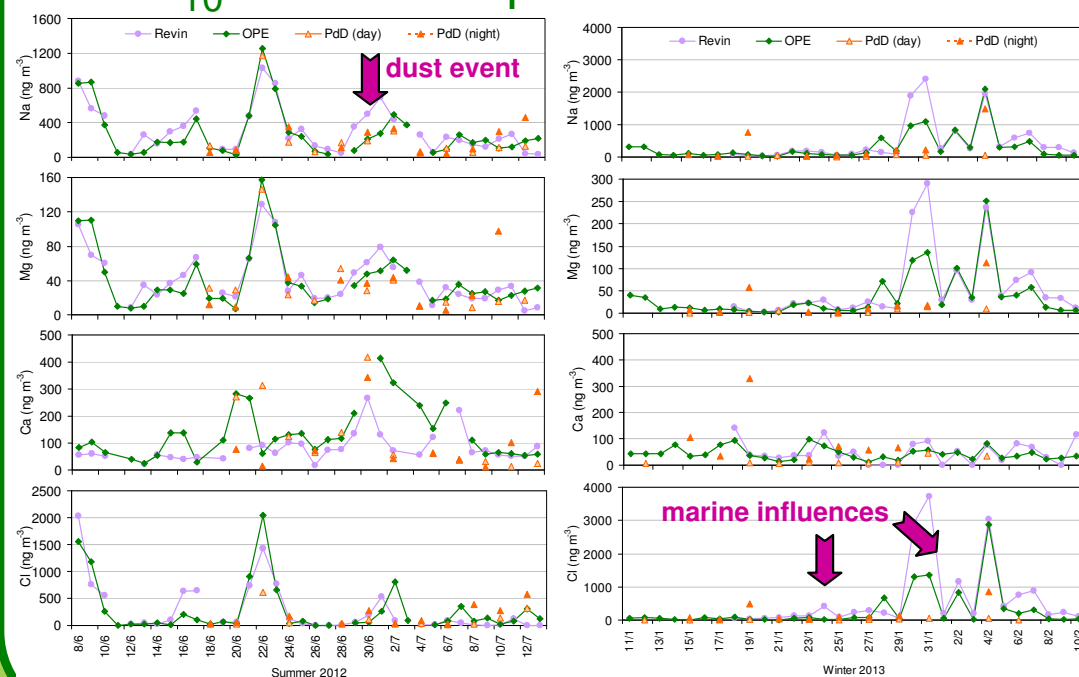


PdD winter data: **increased aerosol concentrations** on Jan 23

⇒ combined anthropogenic and marine influences



## 5. PM<sub>10</sub> chemical speciation



## Main conclusions

- ⇒ Significant contribution to the EMEP European campaign (5/30 sites)
- ⇒ Aerosol concentrations mostly typical of remote sites with contrasted seasonal variations
- ⇒ Observations of specific events of regional/national impact

The authors acknowledge funding from the French Agency of Environment and Energy Management (ADEME grants 1262C0022 and 1262C0039), the MISTRALS/ChArMEX program, the EU-FP7 ACTRIS program, CTC-CORSICA and the CaPPA project (ANR-10-LABX-005).

